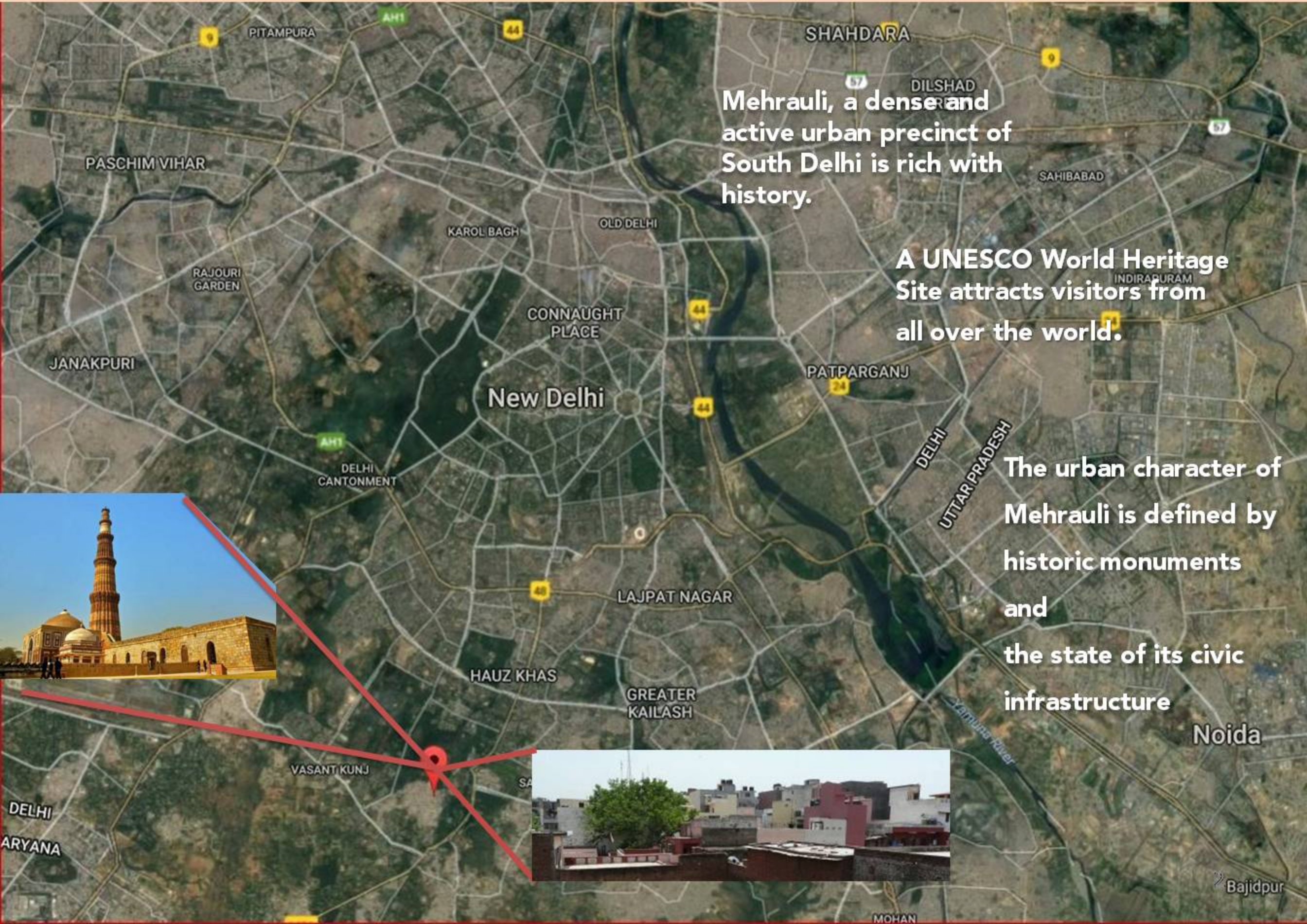




Urban Renewal by Citizens





Mehrauli, a dense and active urban precinct of South Delhi is rich with history.

A UNESCO World Heritage Site attracts visitors from all over the world.

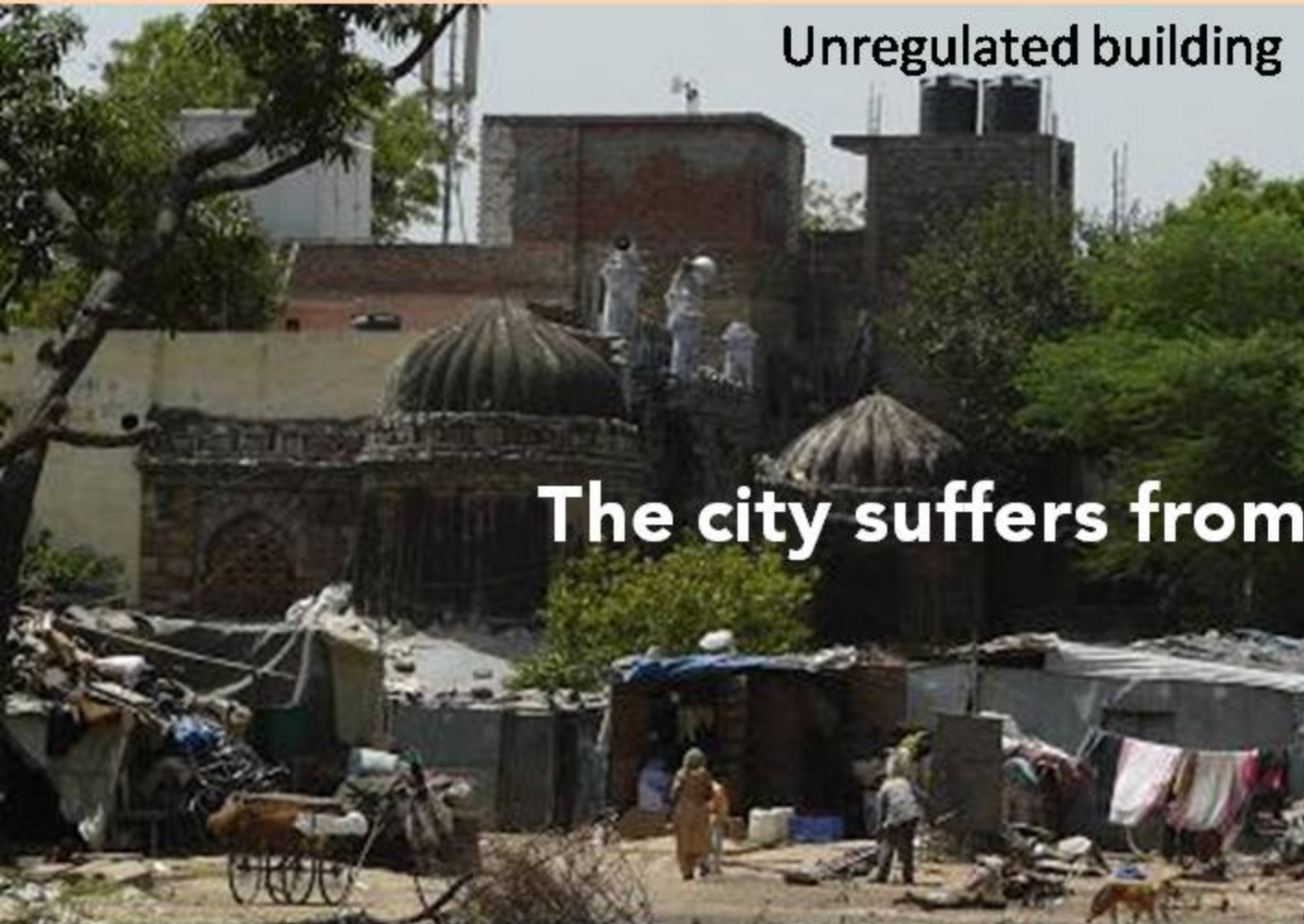
The urban character of Mehrauli is defined by historic monuments and the state of its civic infrastructure



Noida

Bajidpur

MOHAN



Unregulated building



Traffic chaos

The city suffers from ecological stress



Neglected public spaces

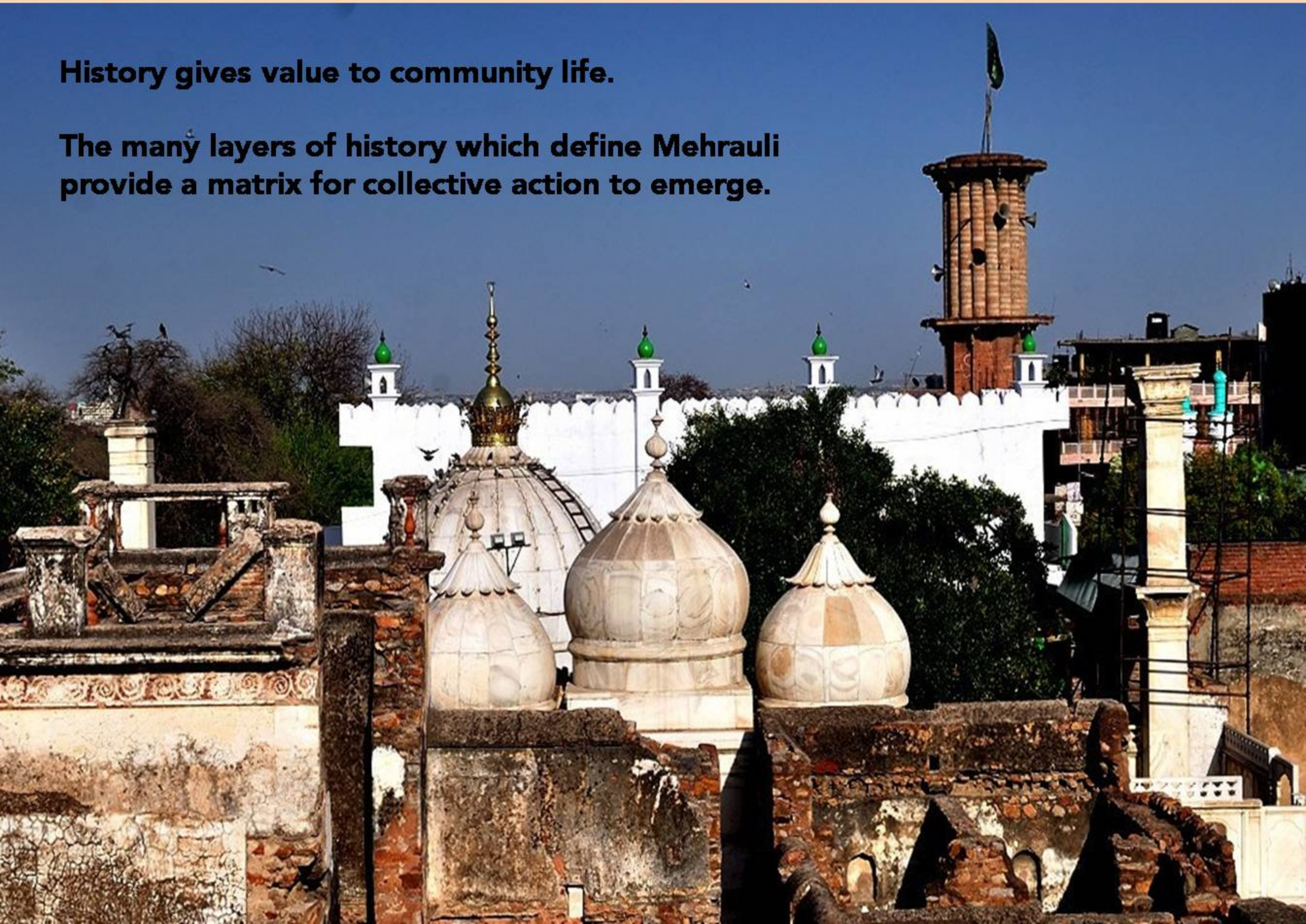


Unplanned public utilities

Urban form has lost its connection with history

History gives value to community life.

The many layers of history which define Mehrauli provide a matrix for collective action to emerge.



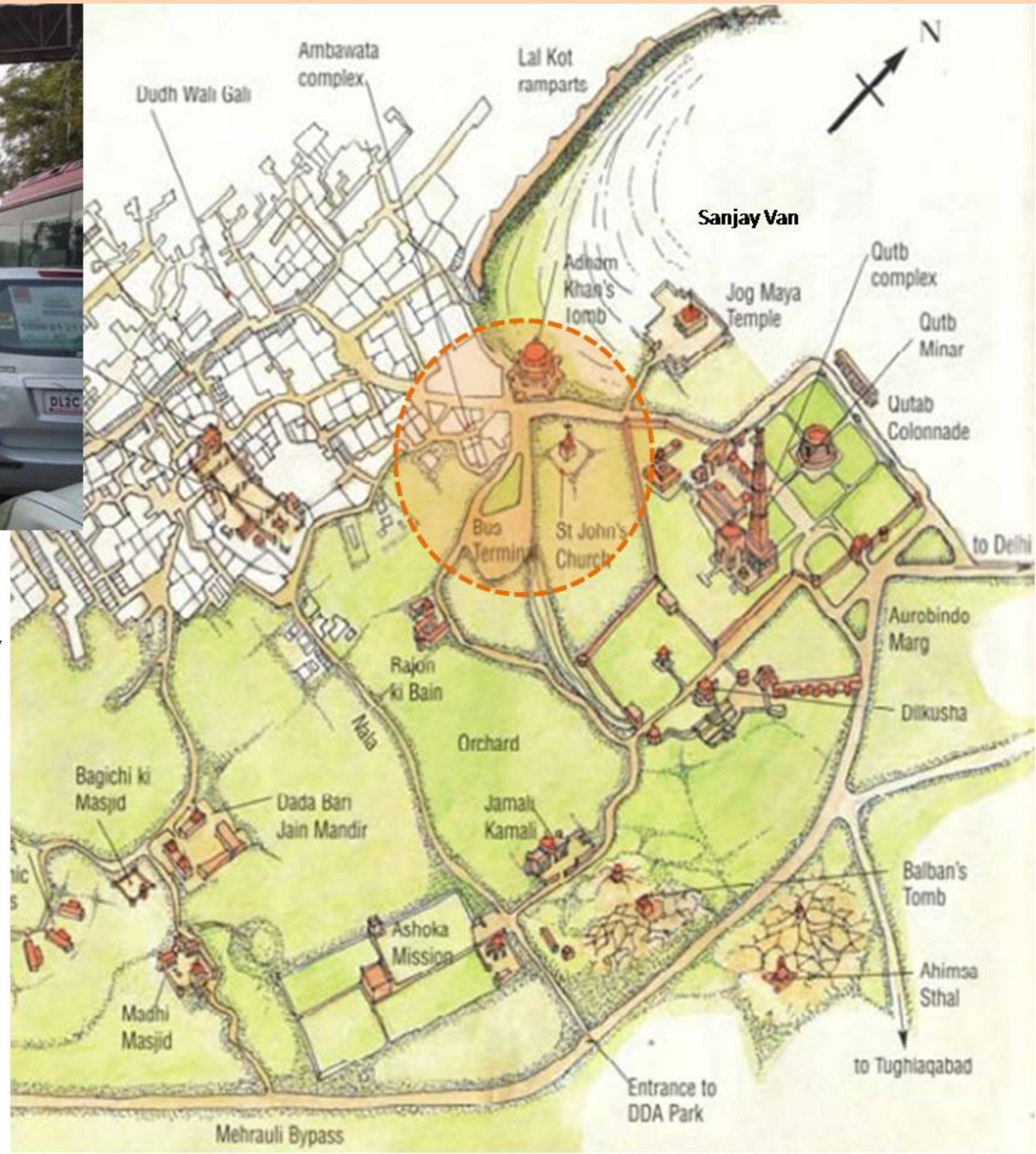


Regeneration of historic settlements will nurture the relationship
that people have with their environment

and build on shared values, community capacity and cross-sectoral collaboration.



Initiating a demonstration exercise in one significant public place of Mehrauli where the community will become part of the urban renewal process which can be extended throughout the settlement.



The neighbourhood of Adam Khan's tomb (better known as Bhul Bhulaiyan), with the adjacent bus terminus and Sanjay Van Park forms the site for the pilot.

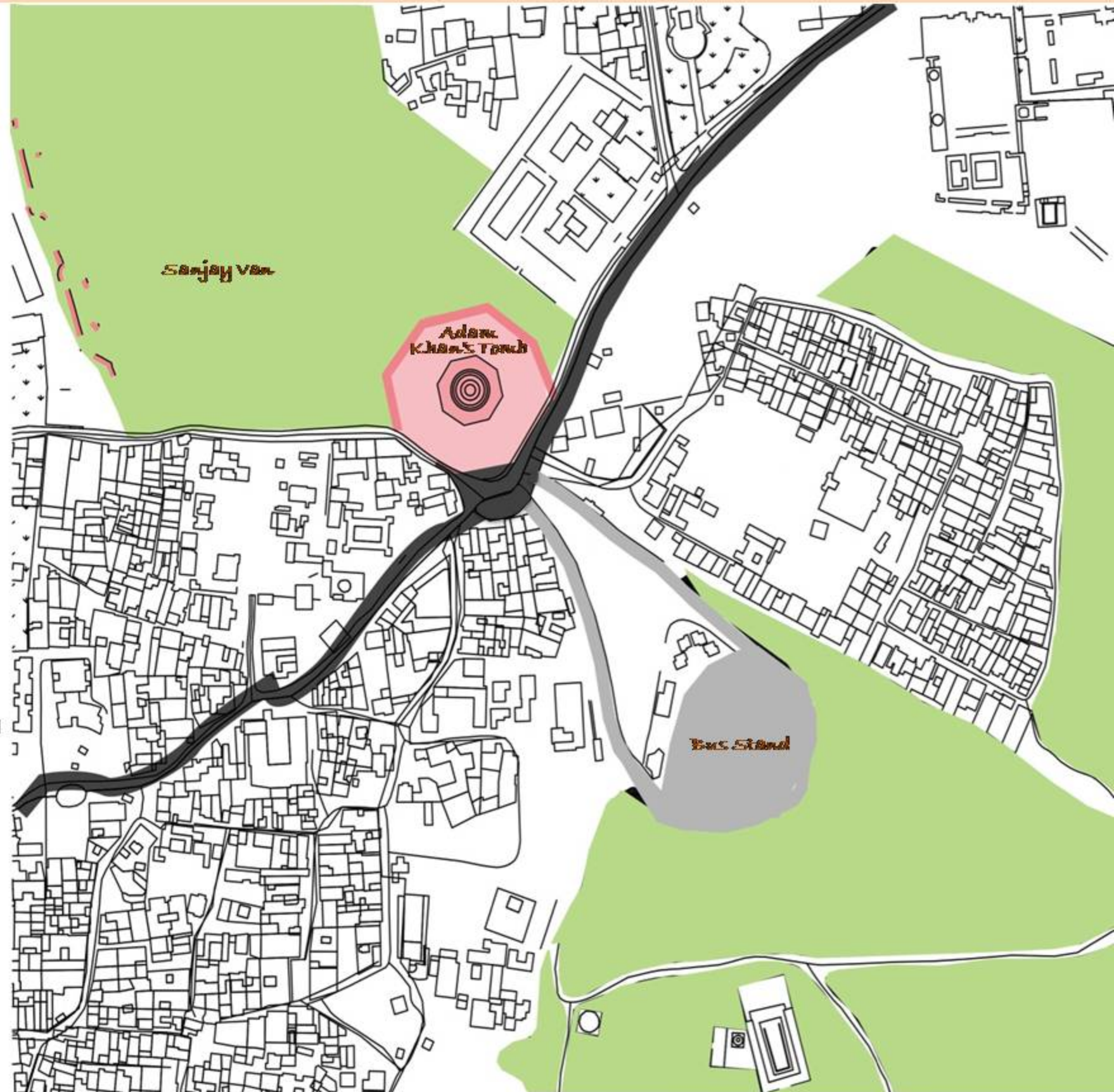
The area is intersected by the busy road which runs through the main markets of Mehrauli all along the ridge defining its topography.

The project aims to:

- Initiate a process of **economic and social regeneration** of the area
- Improve the condition of the **heritage assets**
- Upgrade usable **public space** for the community and visitors
- Improve the basic **civic infrastructure** - drainage, sewerage, lighting
- Regulate the **mobility** in the area

The **budget** for infrastructure is available with local authorities / municipal agencies

Inter-agency **coordination** is required to implement the various projects



The first phase of the project will span a period of 18 months.

AUDIBLE LANDSCAPES
 Focusses on creative placemaking that intersects art, space, and the public, and will result in a temporary installation in a public park near Shamshi Talab.

MENTORS:
 Mrinalini Aggarwal (Streetlight)

Priyanka Jain (3x3 Design)

Virkein Dhar (Odd Bird Theatre)

6-7 AUG 2016

1 PLAYING WITH MEMORY
 Exploring ways to access people's perception of 'Space and Place'

MENTORS:
 Nirmal Kulkarni (Investigating Design)

Richa Pant (Investigating Design)

Parul Kiri Roy (Investigating Design)

20-21 AUG 2016

2 SPATIALITY
 Identifying the tangible and intangible aspects of activities people undertake in a space and its 'historical' significance.

MENTORS:
 Prof.Savyasaachi (Soundboard Media)

Shirishendu Banerjee (Soundboard Media)

Nidhi Batra (Sehreeti)

SEPTEMBER 2016

3 INDI-GENIUS
 Reading the vernacular in habitat through architecture, language, symbols and imagery.

SEPTEMBER 2016

4 URBAN ECOLOGY
 Focus on historical structures and the city, hygiene and habitat, and wider ecological systems.

MENTOR:
 Henri Fanthome (Henri Fanthome Office of Architecture)

OCTOBER 2016

5 MAPPING
 Plotting patterns of community and its various stakeholders.

OCTOBER 2016

हमारी महरौली

Living the History - Community Perspectives

GREHA, SEHREETI and INDES on behalf of Mehrauli Collectives are organising a 'series of urban workshops' exploring the historic relationship that people have with their urban environment. These relationships unfold through activities, images, notions and various associations in the settlements. These then become a part of the story of urban space along with the tangible structures and systems that inhabit the space. These urban workshops are scheduled as 'Weekend Workshops' in August, September and October 2016 and are directed to all professionals and students in the urban space - planners, designers, architects, sociologists, anthropologists, political scientist, philosophers, communication and media professionals, twriters, historians and so on. All workshops would be a confluence of professional participants students and local community of Mehrauli.

CORE TEAM:
 Prof.M.N. Ashish Ganju,
 Prof.Savyasaachi,
 Nidhi Batra,
 Parul Kiri Roy

For further details, contact:
<https://www.facebook.com/Mehrauli-Collective-115511201011841/> or write to:

1-2 October
 Nehru Yuva Kendra - Mehrauli

MEHRAULI TALKIES

Special guest
 William Dalrymple
 Deep Bajaj

Shirishendu Banerjee
 Nidhi Batra

Prof. Savyasaachi
 Uma Azhar

Soundboard

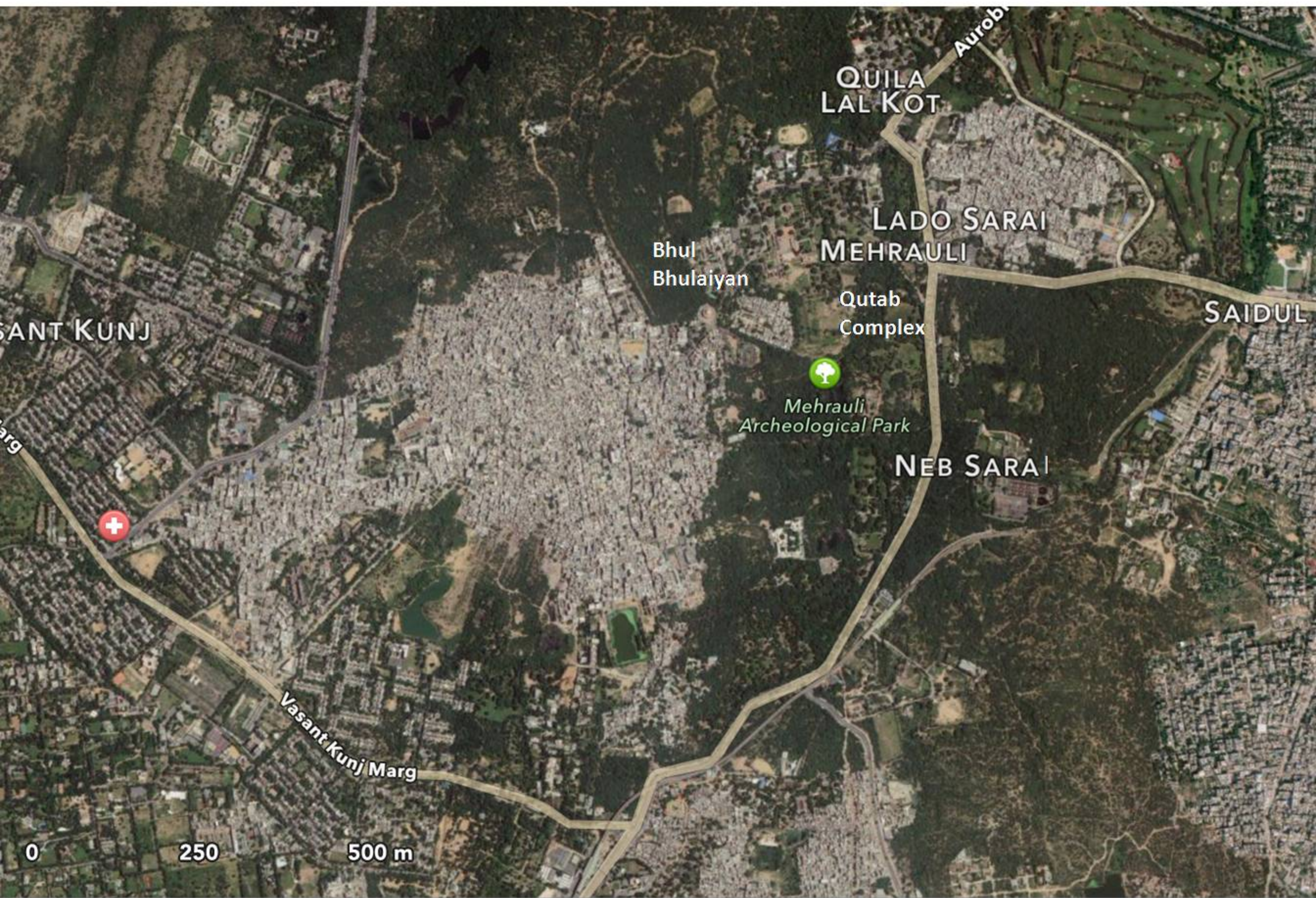
AUDIBLE LANDSCAPES

6-7 August 2016
 10:00 AM - 12:00 PM

STREETLIGHT

5-6 November

Locating Mehrauli Ecologically



QUILA
LAL KOT

LADO SARAI
MEHRAULI

Bhul
Bhulaiyan

Qutab
Complex

SAIDUL

VASANT KUNJ

Mehrauli
Archeological Park

NEB SARAI

Vasant Kunj Marg

0 250 500 m